

## Race course: GPS files

As the course of the 2022 UCI MTB Marathon World Championships crosses private property and environmentally sensitive areas not normally open to public, it was not possible to pre-publish the GPS files.

The course is now signposted and GPS available on the Ride with GPS platform:

<https://ridewithgps.com/trips/102647561>

## Women's extra loop:

On the first lap **only**, on km 25, Women will take a deviation to do another 7,5km loop:

<https://ridewithgps.com/routes/40934742>

## Feed & Technical Assistance (FTA) zones:

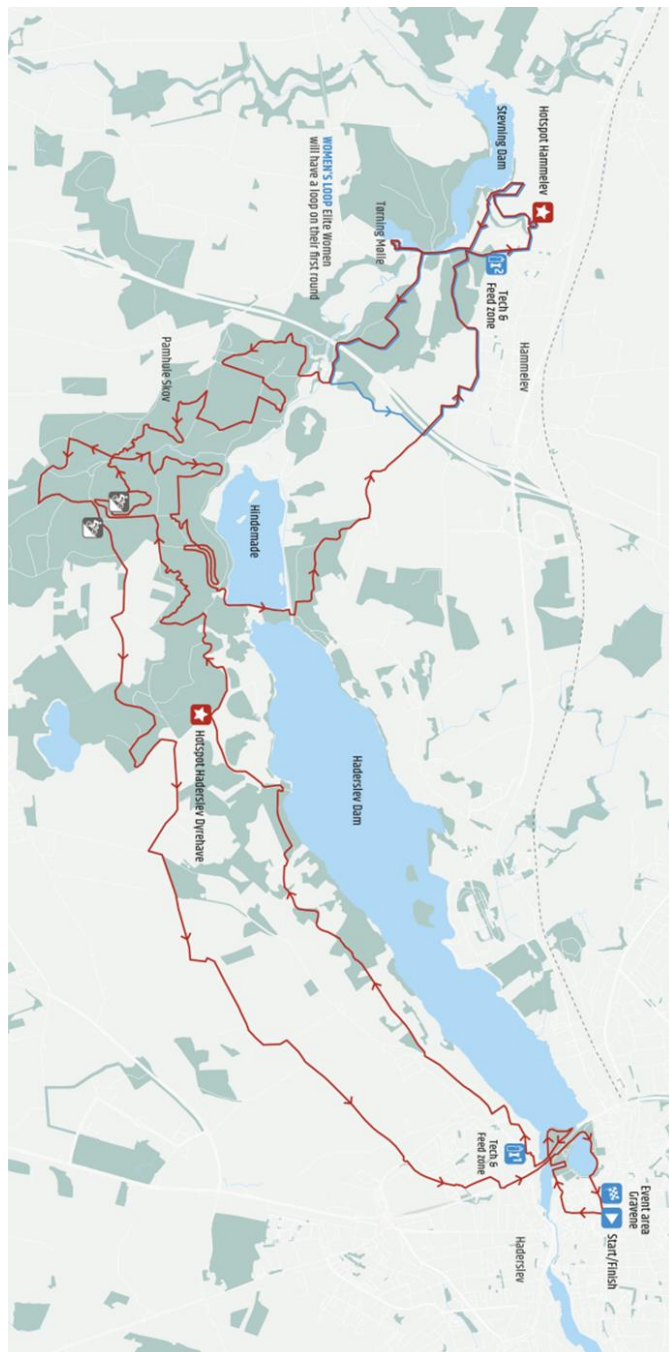
- FTA 1 - km 2 - Frejasvej str, Haderslev: <https://tinyurl.com/2022MTBXCWCh-FTA1>
- FTA 2 - km 20.5 - Egevej str, Hammelev: <https://tinyurl.com/2022MTBXCWCh-FTA2>

## Suggested routes to drive between the Feed & Technical Assistance zones:

- <https://maps.app.goo.gl/TE2wUUB5y2qsMwXr8>
- <https://maps.app.goo.gl/Ro6EM5fLuTQsTM8z6>



### Race Map



## Altitude Charts

Men's race - 120 km - 3 laps

Women's race - 87,5 km - 2 laps and a loop

